

---

**TECHNICAL MANUAL**

**UNIT AND DIRECT SUPPORT MAINTENANCE  
REPAIR PARTS AND SPECIAL TOOLS LIST**

**FOR**

**REFRIGERATOR, PANEL TYPE  
PREFABRICATED ASSEMBLIES**

<b>600 CU. FT.</b>	<b>MODEL MDS1600N</b>	<b>NSN 4110-01-361-3891</b>
<b>600 CU. FT.</b>	<b>MODEL TKR-600C</b>	<b>NSN 4110-01-264-2101</b>
<b>600 CU. FT.</b>	<b>MODEL AA600PF</b>	<b>NSN 4110-01-166-3579</b>
<b>1200 CU. FT.</b>	<b>MODEL AA1200PFA</b>	<b>NSN 4110-01-167-5320</b>
<b>4000 CU. FT.</b>	<b>MODEL AA4000PF</b>	<b>NSN 4110-01-166-3580</b>
<b>4000 CU. FT.</b>	<b>MODEL TKR-4000C</b>	<b>NSN 4110-01-315-9329</b>

**DISTRIBUTION STATEMENT A: Approved for public release; distribution is unlimited.**

**\* This manual supersedes TM 9-4110-241-23P, dated 29 November 1990**

TECHNICAL MANUAL

NO. 9-4110-241-23P

HEADQUARTERS  
DEPARTMENTS OF THE ARMY  
WASHINGTON D. C., 28 February 1995

TECHNICAL MANUAL

Unit and Direct Support Maintenance  
Repair Parts and Special Tools List  
for  
REFRIGERATOR, PANEL TYPE  
PREFABRICATED ASSEMBLIES

600 CU. FT.	MODEL MDSI600N	NSN 4110-01-361-3891
600 CU. FT.	MODEL TKR-600C	NSN 4110-01-264-2101
600 CU. FT.	MODEL AA600PF	NSN 4110-01-166-3579
1200 CU. FT.	MODEL AA120PFA	NSN 4110-01-167-5320
4000 CU. FT.	MODEL AA4000PF	NSN 4110-01-166-3580
4000 CU. FT.	MODEL TKR-4000C	NSN 4110-01-315-9329

Current as of 15 March 1995

**REPORTING ERRORS AND RECOMMENDING IMPROVEMENTS**

You can help improve this manual if you find any mistakes or if you know of a way to improve the procedures, please let us know. Mail your letter, DA Form 2028 (Recommended Changes to Publications and Blank Forms), or DA Form 2028-2 located in the back of this manual directly to Commander, US Army Aviation and Troop Command, ATTN AMSAT-I-MP, 4300 Goodfellow Blvd, St. Louis, MO 63120-1798. A reply will be furnished directly to you.

DISTRIBUTION STATEMENT A: Approved for public release, distribution is unlimited.

**TABLE OF CONTENTS**

	PAGE	ILLUS/ FIGURE
Section I. Introduction.....	1	
Section II. Repair Parts List .....	1-1	
Group 01 Refrigerator		
Panels.....	1-1	1
Panel Components and Clamp Assembly.....	2-1	2
Refrigerator Door Assembly .....	3-1	3
Group 02 Electrical Wlnng, Switch, and Light Assembly		
Electrical Components, Panel C .....	4-1	4
Group 03 Interior Components		
Thermometer and Floor Racks.....	5-1	5
Drains .....	6-1	6

\* This manual supersedes TM 9-4110-241-23P, dated 29 November 1990.

		PAGE	ILLUS/ FIGURE
Group 04	Bulk Materials Listing.....	BULK-1	BULK
Section III.	Special Tools List (Not Applicable)		
Section IV.	Cross Reference Indexes		
	National Stock Number Index.....	I-1	
	Part Number Index.....	I-2	
	Figure and Item Number Index.....	I-6	

**UNIT AND DIRECT SUPPORT  
MAINTENANCE REPAIR PARTS AND SPECIAL TOOLS LIST**

**Section I. INTRODUCTION**

**1. SCOPE.** This RPSTL lists and authorizes spares and repair parts; special tools; special test, measurement, and diagnostic equipment (TMDE); and other special support equipment required for performance of unit and direct support maintenance of the Refrigerator, Panel Type Prefabricated Assemblies. It authorizes the requisitioning, issue, and disposition of spares, repair parts and special tools as indicated by the source, maintenance and recoverability (SMR) codes.

**2. GENERAL.** In addition to this section introduction, this Repair Parts and Special Tools List is divided into the following sections:

a. Section II Repair Parts List. A list of spares and repair parts authorized by this RPSTL for use in the performance of maintenance. This list also includes parts which must be removed for replacement of the authorized parts. Parts lists are composed of functional groups in ascending alphanumeric sequence, with the parts in each group listed in ascending figure and item number sequence. Bulk materials are listed in item name sequence items are shown in the associated illustration(s)/figure(s).

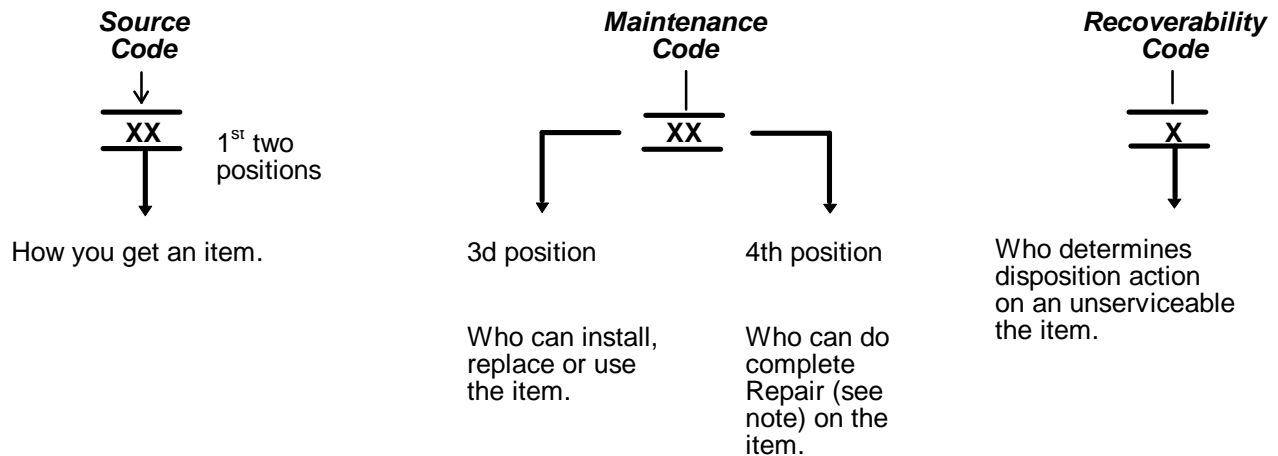
b. Section III Special Tools List. A list of special tools, special TMDE, and other special support equipment authorized by this RPSTL as indicated by Basis of Issue (BOI) information in DESCRIPTION AND USABLE ON CODE column) for the performance of maintenance.

c. Section IV Cross Reference Index. A list, in National Item Identification Number (NIIN) sequence, of all National stock numbered items appearing in the listing followed by a list in alphanumeric sequence of all part numbers appearing in the listings. National stock numbers and part numbers are cross referenced to each illustration figure and item number appearance. The figure and item number index lists figure and item numbers in alphanumeric sequence and cross references NSN, CAGEC and part number.

**3. EXPLANATION OF COLUMNS (SECTIONS II AND III).**

a. ITEM NO (Column (1)). Indicates the number used to identify items called out in the illustration.

b. SMR Code (Column (2)). The Source, Maintenance, and Recoverability (SMR) code is a 5 position code containing supply, requisitioning information maintenance category authorization criteria, and disposition instruction, as shown in the following breakout:



\*Complete Repair Maintenance capacity, capability, and authority to perform all corrective maintenance tasks of the Repair function in a use/user environment in order to restore serviceability to a failed item.

(1) Source Code The source code tells you how to get an item needed for maintenance, repair, or overhaul of an end item/equipment Explanations of source codes follows:

Source Code	Explanation
PA PB PC** PD PE PF PG	<p>Stocked items use the applicable NSN to request, requisition items with these source codes. They are authorized to the category indicated by the code entered in the 3rd position of the SMR code.</p> <p><b>**NOTE:</b> Items coded PC are subject to deterioration.</p>
KD KF K	<p>Items with these codes are not to be requested requisitioned individually. They are part of a kit which is authorized to the maintenance category indicated in the 3rd position of the SMR code. The complete kit must be requisitioned and applied.</p>
MO-(Made at Unit/AVUM Level) MF-(Made a DS/AVUN Level) MH-(Made at GS Level) ML-(Made at Specialized Repair Activity (SRA)) MD-(Made at Depot)	<p>Items with these codes are not to be requested requisitioned individually. They must be made from bulk material which is identified by the part number in the DESCRIPTION and USABLE ON CODE (UOC) column and listed in the Bulk Material group of the repair parts list in this RPSTL. If the item is authorized to you by the 3rd position code of the SMR code, but the source code indicates it is made at a higher level order the item from the higher level of maintenance.</p>
AO-(Assembled by Unit/AVUM Level) AF-(Assembled by DS/AVUM Level) AH-(Assembled by GS Category) AL-(Assembled by SRA) AD-(Assembled by Depot)	<p>Items with these codes are not to be requested requisitioned individually. The parts that make up the assembled item must be requisitioned or fabricated and assembled at the level of maintenance indicated by the source code. If the 3rd position code of the SMR code authorizes you to replace the item, but the source code indicates the items are assembled at a higher level, order the item from the higher level of maintenance.</p>
XA -	Do not requisition XA-code item. Order its next higher assembly (Refer to the following NOTE).
XB -	If an "XB" item is not available from salvage, order it using the CAGEC and part number given.
XC -	Installation drawing, diagram, instruction sheet, field service drawing, that is identified manufacturer's part number.
XD -	Item is not stocked Order an "XD"-coded item through normal supply channels using the CAGEC and part number given, if no NSN is available.

**NOTE**

Cannibalization or controlled exchange, when authorized, may be used as a source of supply for items with the above source codes, except for those source coded "XA" or those aircraft support items restricted by requirements of AR 750-1.

(2) Maintenance Code. Maintenance codes tell you the level(s) of maintenance authorized to USE and REPAIR support items. The maintenance codes are entered in the third and fourth positions of the SMR code as follows:

(a) The maintenance code entered in the third position tells you the lowest maintenance level authorized to remove, replace, and use an item. The maintenance code entered in the third position will indicate authorization to the following levels of maintenance.

**Maintenance**

<b>Code</b>	<b>Application/Explanation</b>
C-	Crew or operator maintenance done within unit/AVUM maintenance.
O-	Unit level/AVUM maintenance can remove, replace, and use the item.
F-	Direct support/AVIM maintenance can remove, replace, and use the item.
H-	General support maintenance can remove, replace, and use the item.
L-	Specialized repair activity can remove, replace, and use the item.
D-	Depot can remove, replace, and use the Item.

(b) The maintenance code entered in the fourth position tells whether or not the item is to be repaired and identifies the lowest maintenance level with the capability to do complete repair (i e, perform all authorized repair functions ).

**NOTE**

Some limited repair may be done on an item at a lower level of maintenance, if authorized by the Maintenance Allocation Chart and SMR codes.

**Maintenance**

<b>Code</b>	<b>Application/Explanation</b>
O-	Unit/AVUM is the lowest level that can do complete repair of the item.
F-	Direct support/AVIM is the lowest level that can do complete repair of the item.
H-	General Support is the lowest level that can do complete repair of the item.
L-	Specialized repair activity is the lowest level that can do complete repair of the item.
D-	Depot is the lowest level that can do complete repair of the item.
Z-	Nonreparable. No repair is authorized.
B-	No repair is authorized. No parts or special tools are authorized for the maintenance of a "B" coded item. However, the item may be reconditioned by adjusting, lubricating, etc., at the user level.

(3) Recoverability Code. Recoverability codes are assigned to items to indicate the disposition action on unserviceable Items. The recoverability code is entered in the fifth position of the SMR Code as follows:

**Recoverability**

**Codes**

**Application/Explanation**

- Z - Nonreparable item. When unserviceable condemn and dispose of the item at the level of maintenance shown in 3rd position of SMR Code.
- O - Reparable item. When not economically reparable, condemn and dispose of the item at unit or AVUM level.
- F - Reparable item. When not economically reparable, condemn and dispose of the item at the direct support or AVIM level.
- H - Reparable item. When not economically reparable, condemn and dispose of the item at the general support level.
- D - Reparable item. When beyond lower level repair capability return to depot. condemnation and disposal of item not authorized below depot level.
- L - Reparable Item. Condemnation and disposal not authorized below specialized repair activity (SRA).
- A - Item requires special handling or condemnation procedures because of specific reasons (e.g., precious metal content, high dollar value, critical material or hazardous material). Refer to appropriate manuals directives for specific instructions.

c. CAGEC (Column (3)). The Commercial and Government Entity Code (CAGEC) is a 5-digit numeric code which is used to identify the manufacturer, distributor, or Government agency activity that supplies the item.

d. PART NUMBER (Column (4)). Indicates the primary number used by the manufacturer, (individual company firm corporation or Government activity), which controls the design and characteristics of the item by means of its engineering drawings specifications, standards, and inspection requirements to identify an item or range of items.

**NOTE**

When you use an NSN to requisition an item, the item you receive may have a different part number from the number listed.

e. DESCRIPTION AND USABLE ON CODE (UOC) (Column (5)). This column includes the following information:

- (1) The Federal item name and, when required, a minimum description to identify the item.
- (2) Part numbers of bulk materials are referenced in this column in the line entry to be manufactured fabricated..
- (3) The statement "END OF FIGURE" appears just below the last item description in Column (5) for a given figure in both Section II and Section III.

f. QTY (Column (6)). The QTY (quantity per figure) column indicates the quantity of the item used in the break-out shown on the illustration figure, which is prepared for a functional group, subfunctional group, or an assembly. A "V" appearing in this column instead of a quantity indicates that the quality is variable and may vary from application to application.

**4. EXPLANATION OF INDEX FORMAT AND COLUMNS (SECTION IV).**

a. NATIONAL STOCK NUMBER (NSN) INDEX.

(1) STOCK NUMBER Column. This column lists the NSN in national item identification number (NIIN) sequence. The NIIN consists of the last nine digits of the NSN, i.e.

NSN
<hr style="width: 100%;"/>
5305-01 574 1467
NIIN

When using this column to locate an item ignore the first four digits of the NSN. Use the complete NSN (113 digits) when requisitioning items by stock number.

(2) FIG. Column. This column lists the number of the figure where the item is identified/located. The figures are in numerical order in Section II and Section III.

(3) ITEM Column. The item number identifies the item associated with the figure listed in the adjacent FIG column. This item is also identified by the NSN listed on the same line.

b. PART NUMBER INDEX. Part numbers in this index are listed by part number in ascending alphanumeric sequence (i.e., vertical arrangement of letter and number combination which places the first letter or digit of each group in order A through Z, followed by the numbers 0 through 9, and each following letter or digit in like order).

(1) CAGEC Column. The Commercial and Government Entity Code (CAGEC) is a 5-digit numeric code used to identify the manufacturer, distributor, or Government agency/activity that supplies the item.

(2) PART NUMBER. Column indicates the primary number used by the manufacturer (individual, firm, corporation, or Government activity), which controls the design and characteristics of the item by means of its engineering drawings, specifications, standards, and inspection requirements to identify an item or range of items.

(3) STOCK NUMBER Column. This column lists the NSN for the associated part number and manufacturer identified in the PART NUMBER and CAGEC columns to the left.

(4) FIG Column. This column lists the number of the figure where the item is identified/located in Section II and Section III.

(5) ITEM Column. The item number is that number assigned to the item as it appears in the figure referenced in adjacent figure number column.

c. FIGURE AND ITEM NUMBER INDEX.

(1) FIG Column. This column lists the number of the figure where the item is identified/located in Section II and Section III.

(2) ITEM Column. The item number is that number assigned to the item as it appears in the figure referenced in the adjacent figure number column.

(3) STOCK NUMBER. Column This column lists the NSN for the item (4) CAGEC Column. The Commercial and Government Entity Code (CAGEC) is a 5-digit numeric code used to identify the manufacturer, distributor, or Government agency/activity that supplies the item.

(5) PART NUMBER. Column indicates the primary number used by the manufacturer (individual, firm, corporation, or Government activity), which controls the design and characteristics of the item by means of its engineering drawings, specifications, standards, and inspection requirements to identify an item or range of items.

**5. SPECIAL INFORMATION.**

a. USABLE ON CODE. The usable on code appears in the lower left corner of the Description Column heading. Usable on codes are shown as "UOC " in the Description Column (justified left) on the last line of the applicable item description/nomenclature. Uncoded items are applicable to all models.

<u>UOC</u>	<u>Model</u>
DST	Model AA60OPF
DSU	Model A1 200PFA
DSV	Model AA4000PF
EKN	Model TKR600C
EVB	Model TKR4000C
FGE	Model MDS160ON

b. FABRICATION INSTRUCTIONS. Bulk materials required to manufacture items are listed in the Bulk Material Functional Group of this RPSTL. Part numbers for bulk materials are also referenced in the description column of the line entry for the item to be manufactured/fabricated. Detailed fabrication instructions for items source coded to be manufactured or fabricated are found in TM 9-4110-241-13.

c. INDEX NUMBERS. Items which have the word BULK in the figure column will have an index number shown in the item number column. This index number is a cross-reference between the National Stock Number/Part Number Index and the bulk material list in Section II.



- d. ASSOCIATED PUBLICATIONS. The publications listed below pertain to the Refrigerator and its components.

Publication

Short Title

TM 9-4110-241-13 Refrigerator, Panel Type, Prefab Assem. Maintenance Manual.

**6. HOW TO LOCATE REPAIR PARTS**

- a. When National Stock Numbers or Part Numbers are NOT Known.

(1) First. Using the table of contents, determine the assembly or subassembly group to which the item belongs. This is necessary since figures are prepared for assembly groups and subassembly groups, and listings are divided into the same groups.

(2) Second. Find the figure covering the assembly group or subassembly group to which the item belongs.

(3) Third. Identify the item on the figure and use the Figure and Item Number Index to find the NSN.

- b. When National Stock Number or Part Number is Known.

(1) First. Using the of National Stock Number and Part Number Indexes find the pertinent National Stock Number or Part Number. The NSN index is in National Item Identification Number (NIIN) sequence (see paragraph 4.a ). The part numbers in the Part Number Index are listed in ascending alphanumeric sequence (see paragraph 4.b ). Both indexes cross-reference you to the Illustration, figure and item number of the item you are looking for.

(2) Second. Turn to the figure and item number, verify that the item is the one you are looking for, then locate the item number in the repair parts list for the figure.

- 7. ABBREVIATIONS.** Abbreviations used in this manual are listed in MIL-STD 12.

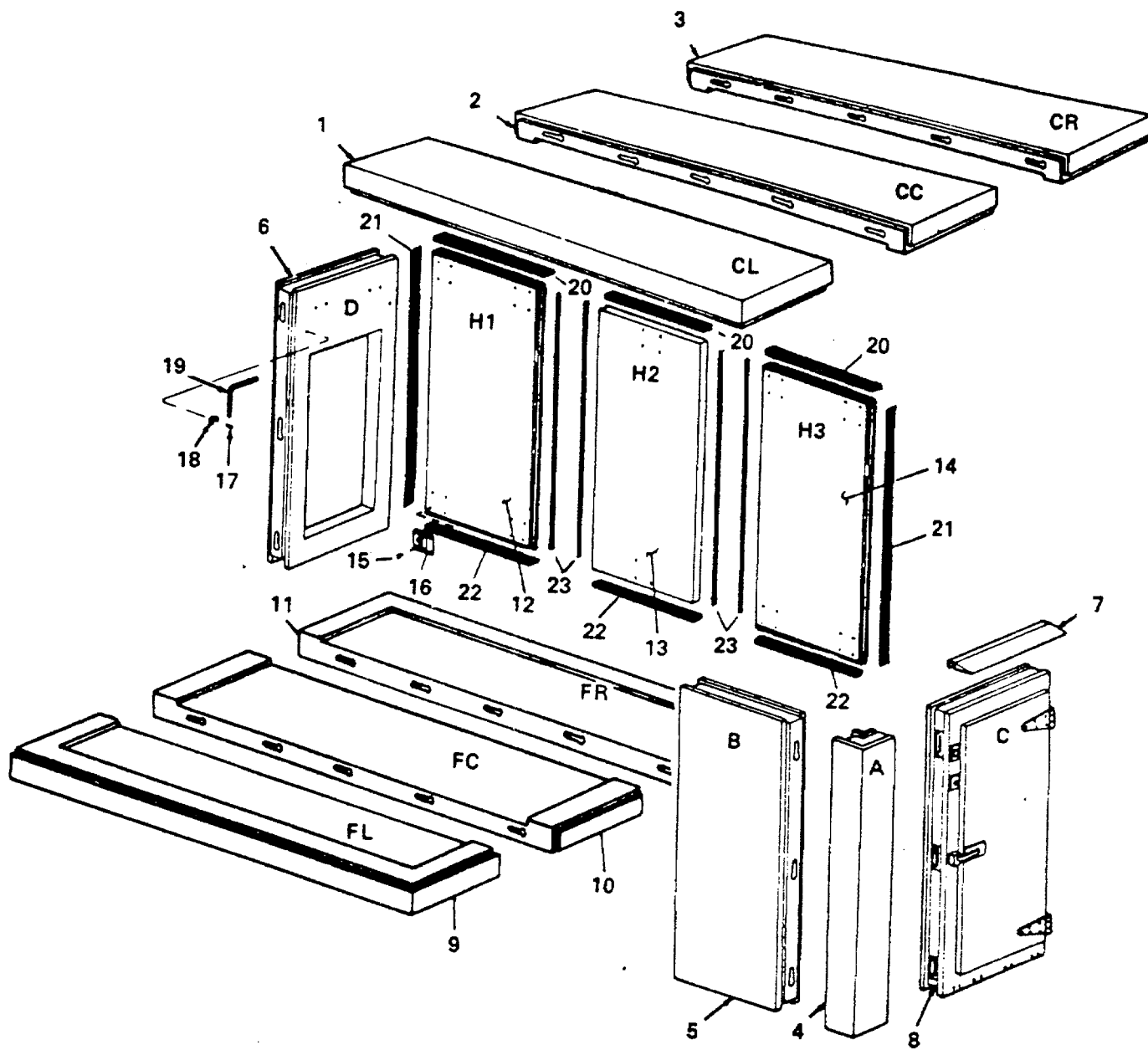


Figure 1. Panels

## SECTION II

TM 9-4110-241-23P

(1) ITEM NO	(2) SMR CODE	(3) CAGEC	(4) PART NUMBER	(5) DESCRIPTION AND USABLE ON CODES(UOC)	(6) QTY
GROUP 01 REFRIGERATOR					
FIG. 1 PANELS					
1	PAOFF	81337	5-13-2658	PANEL, BUILDING, PREF CL .....1 UOC: DST, DSU, DSV, FGE	1
1	PAOFF	53853	90118C	PANEL, BUILDING PREF CL .....1 UOC: EKN	1
1	PAOFF	53853	90118	PANEL, BUILDING, PREF CL .....1 UOC: EVB	1
2	XDOFF	53853	90121	PANEL, BUILDING, PREF CENTER, CC .....1 UOC: DST	1
2	XDOFF	53853	90121	PANEL, RAILING, PREF CENTER, CC .....3 UOC: DSU	3
2	XDOFF	53853	90121	PANEL, BUILDING, PREF CENTER, CC .....13 UOC: DSV, EVB	13
2	PAOFF	53853	90121C	PANEL, BUILDING PREF CENTER, CC .....1 UOC: EKN	1
2	PAOFF	81337	5-13-2660	CEILING PATCH, CENTE CENTER, CC .....1 UOC: FGE	1
3	XDOFF	53853	90120	PANEL, BUILDING.PREF CR ..... UOC: DST, DSU, DSV, EVB	
3	XBOFF	53853	90120C	PANEL, BUILDING, PREF CR .....1 UOC : EKN	1
3	PAOFF	81337	5-13-2659	CEILING PANEL, RIGHT .....1 UOC: FGE	1
4	PAOFH	53853	90113	PANEL, WALL, H-1 PART .....4 UOC: DST, DSU, DSV, EVB	4
4	PAOFF	53853	90113C	PANEL, WALL, H-1 PART .....4 UOC: EKN	4
4	PAOFF	81337	5-13-2653	CORNER PANEL .....4 UOC: FGE	4
5	PAOFF	53853	90114	PANEL, BUILDING, PREF .....8 UOC: DST	8
5	PAOFF	53853	90114	PANEL, BUILDING, PREF .....11 UOC: DSU	11
5	PAOFF	53853	90114	PANEL, BUILDING, PREF .....26 UOC: DSV, EVB	26
5	PAOFF	53853	90114C	PANEL, BUILDING, PREF .....8 UOC: EKN	8
5	PAOFF	81337	5-13-2654	STD WALL PANEL .....8 UOC: FGE	8
6	PAOFH	53853	90115	EVAPORATOR PANEL .....1 UOC: DST	1
6	XDOFH	53853	90115	EVAPORATOR PANEL .....2 UOC: DSU	2
6	PAOFH	53853	90115	EVAPORATOR PANEL .....4 UOC: DSV, EVB	4
6	PAOFF	53853	90115C	EVAPORATOR PANEL .....1 UOC: EKN	1
6	PAOFF	81337	5-13-2657	EVAPORATOR PANEL .....1 UOC: FGE	1

## SECTION II

TM 9-4110-241-23P

(1) ITEM NO	(2) SMR CODE	(3) CAGEC	(4) PART NUMBER	(5) DESCRIPTION AND USABLE ON CODES(UOC)	(6) QTY
7	XBOZZ	81337	5-13-2665	CANOPY, DOOR ..... UOC: DST, DSU, FGE	1
7	XBOZZ	81337	5-13-2665	CANOPY, DOOR ..... UOC: DSV	4
7	XBOZZ	53853	90024	COVER, ACCESS ..... UOC: EKN	1
7	XBOZF	53853	90024	COVER, ACCESS ..... UOC: EVB	4
8	PAOFF	53853	40106	DOOR FRAME PANEL C ..... UOC: DST, DSU	1
8	PAOFF	81337	5-13-2655	DOOR FRAME PANEL ..... UOC: FGE	
8	PAOFF	53853	40106	DOOR FRAME PANEL C ..... UOC: DSV, EVB	4
8	XDOFF	53853	90106C	DOOR FRAME PANEL C ..... UOC: EKN	1
9	PAOFF	81337	5-13-2658	PANEL, BUILDING, PREF FL ..... UOC: DST, DSU, DSV, FGE	1
9	PAOFF	53853	90117C	PANEL, BUILDING, PREF FL ..... UOC: EKN	1
9	PAOFF	53853	901-7	PANEL, BUILDING, PREF FL ..... UOC: EVB	1
10	XDOFF	53853	90121	PANEL, BUILDING, PREF FC ..... UOC: DST	1
10	XDOFF	53853	90121	PANEL, BUILDING, PREF FC..... UOC: DSU	3
10	XDOFF	53853	90121	PANEL, BUILDING, PREF FC ..... UOC: .DSV, EVB	13
10	PAOFF	53853	90122C	PANEL, BUILDING, PREF FC ..... UOC: EKN	1
10	PAOFF	81337	5-13-2660	FLOOR PANEL CENTER ..... UOC: FGE	1
11	XDOFF	53853	90120	PANEL, BUILDING, PREF FR ..... UOC: DST, DSU, DSV	1
11	PAOFD	53853	90119C	PANEL, BUILDING, PREF FR ..... UOC: EKN	1
11	XDOFF	53853	90119	FLOOR, PANEL, PREF F ..... UOC: EVB, FGE	1
12	XDOFF	53853	90133	PANEL, WALL, REFRIGER ..... UOC: DSV, EVB	3
13	PAOFD	53853	90134	PANEL, WALL, REFRIGER ..... UOC: DSV, EVB	3
14	XDOFF	53853	90135	PANEL, WALL, REFRIGER ..... UOC: DSV, EVB	3
15	XDOZZ	57519	R3040594-1	SCREW, TAPPING, THREA ..... UOC: DSV, EVB	120
16	XDOZZ	57519	R3040593	BOLT, BARREL ..... UOC: DSV, EVB	30
17	PAOZZ	57519	R3040576-1A	SCREW, MACHINE ..... UOC: DST, EKN, FGE	8
17	PAOZZ	57519	R3040576-1A	SCREW, MACHINE ..... UOC: DSU	16

## SECTION II

TM 9-4110-241-23P

(1) ITEM NO	(2) SMR CODE	(3) CAGEC	(4) PART NUMBER	(5) DESCRIPTION AND USABLE ON CODES(UOC)	(6) QTY
17	PAOZZ	57519	R3040576-1A	SCREW, MACH[NE ..... UOC: DSV , EVB	32
18	PAOZZ	72285	4028-9	CLIP, SPRING TENSION ..... UOC: DST, EKN	8
18	PAOZZ	72285	4028-9	CLIP, SPRING TENSION ..... UOC: DSU	16
18	PAOZZ	72285	4028-9	CLIP, SPRING TENSION ..... UOC: DSV	32
18	PAOZZ	75915	105002	CLIP, ELECTRICAL ..... UOC: EKN	8
18	PAOZZ	75915	105002	CLIP, ELECTRICAL ..... UOC: EVB	32
19	PAOZZ	15436	250	KEY, SOCKET HEAD SCR..... UOC: DST, FGE	2
19	PAOZZ	15436	250	KEY, SOCKET HEAD SCR ..... UOC: DSU	4
19	PAOZZ	15436	250	KEY, SOCKET HEAD SCR ..... UOC: DSV	8
19	PAOZZ	32761	1145	KEY, SOCKET HEAD SCR ..... UOC: EKN	1
19	PAOZZ	32761	1145	KEY, SOCKET HEAD SCR ..... UOC: EVB	8
20	MOOZZ	57519	R2610089MF	RUBBER STAMP MFD FROM RUBBER STRIP, P/N R2610089, AS REQUIRED..... UOC: DSV, EVB	1
21	MOOZZ	57519	R2610090MF	RUBBER STRIP MFD FROM RUBBER STRIP, P/N R2610090, AS REQUIRED..... UOC: DSV, EVB	1
22	MOOZZ	57519	R2610091MF	GASKET MFD FROM RUBBER STRIP, P/N R2610091, AS REQUIRED ..... UOC; DSV, EVB	1
23	MOOZZ	57519	R2610092MF	RUBBER STRIP MFD FRO11 RUBBER STRIP, P/N R2610092, AS REQUIRED ..... UOC: DSV, EVB	1

END OF FIGURE

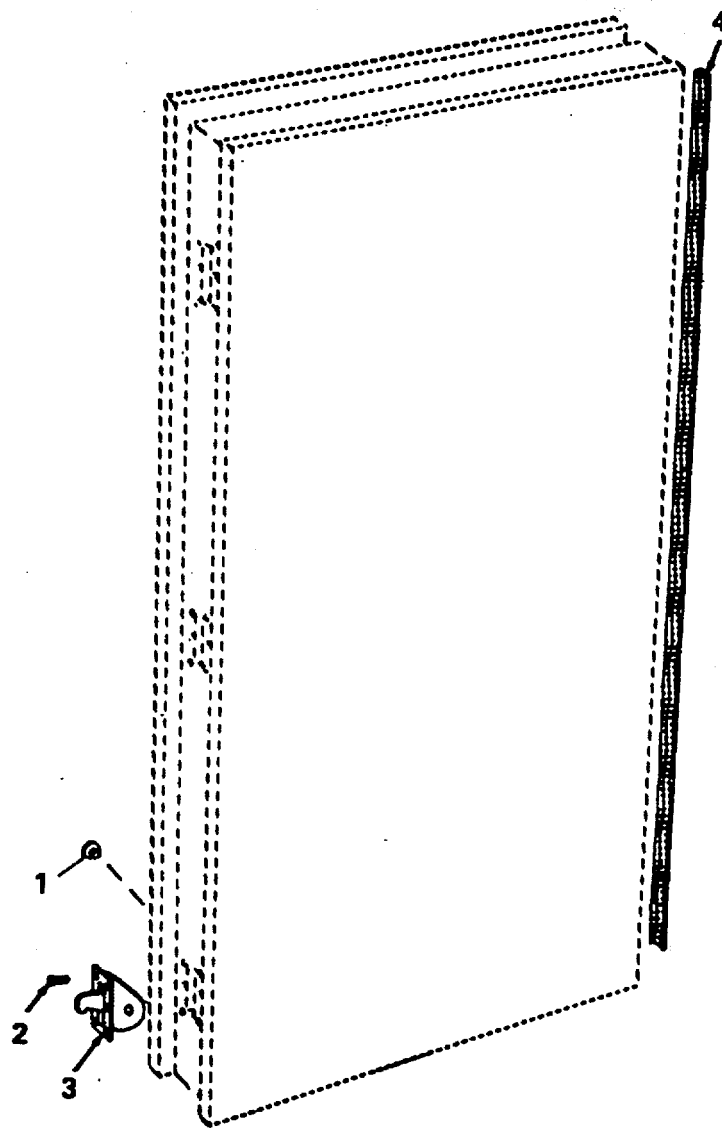


Figure 2. Panel Components and Clamp Assembly

SECTION II

TM 9-4110-241-23P

(1) ITEM NO	(2) SMR CODE	(3) CAGEC	(4) PART NUMBER	(5) DESCRIPTION AND USABLE ON CODES(UOC)	(6) QTY
GROUP 01 REFRIGERATOR					
FIG. 2 PANEL COMPONENTS AND CLAMP ASSEMBLY					
1	PAOZZ	34669	S-1/2-GRAY	CAP-PLUG, PROTECTIVE ..... UOC: DST, EKN, FGE	102
1	PAOZZ	34669	S-1/2-GRAY	CAP-PLUG, PROTECTIVE ..... UOC: DSU	150
1	PAOZZ	34669	S-1/2-GRAY	CAP-PLUG, PROTECTIVE ..... UOC: DSV, EVB	102
2	PAOZZ	57519	R3040595-1	SCREW, MACHINE ..... UOC: DST	612
2	PAOZZ	57519	R3040595-1	SCREW, MACHINE ..... UOC: DSU	900
2	PAOZZ	57519	R3040595-1	SCREW, MACHINE ..... UOC: DSV, EVB	340
2	XDOZZ	87308	C003	SCREW, MACHINE ..... UOC: EKN, FGE	912
3	PAOZZ	15436	248	STRIKE, CATCH ..... UOC: DST, EKN, FGE	102
3	PAOZZ	15436	248	STRIKE, CATCH ..... UOC: DSU	150
3	PAOZZ	15436	248	STRIKE, CATCH ..... UOC: DSV, EVB	390
4	MOOZZ	32761	285MF	GASKET MFD FROM GASKET, P/N 285, CUT TO LENGTH ..... UOC: DST, EKN, FGE	V
4	MOOZZ	32761	285MF	GASKET MFD FROM GASKET, P/N 285, CUT TO LENGTH..... UOC: DSU	V
4	MOOZZ	32761	285MF	GASKET MFD FROM GASKET, P/N 285, CUT TO LENGTH..... UOC: DSV, EVB	V

END OF FIGURE

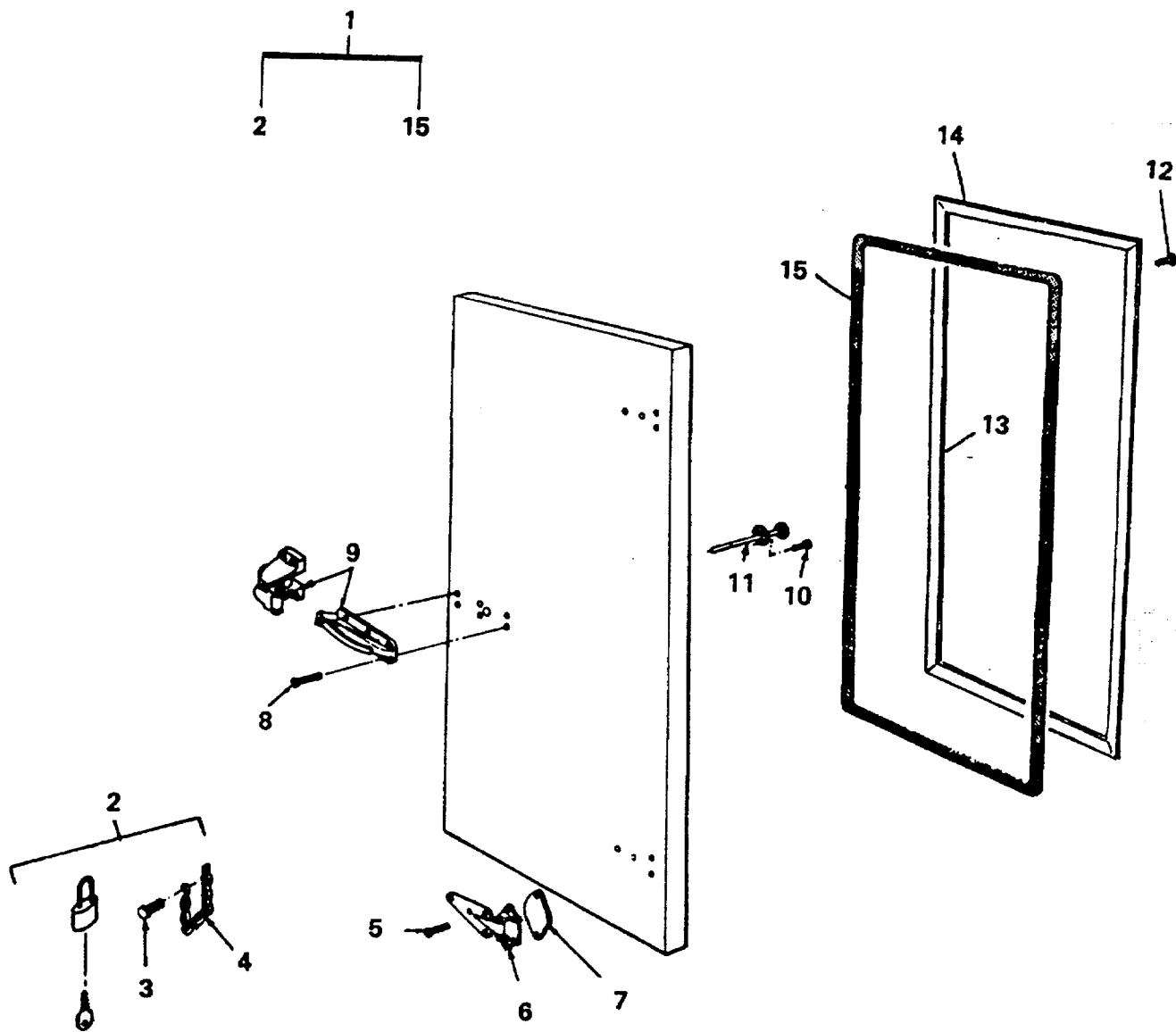


Figure 3. Refrigerator Door Assembly



## SECTION II

TM 9-4110-241-23P

(1) ITEM NO	(2) SMR CODE	(3) CAGEC	(4) PART NUMBER	(5) DESCRIPTION AND USABLE ON CODES(UOC)	(6) QTY
GROUP 01 REFRIGERATOR					
FIG. 3 REFRIGERATOR DOOR ASSEMBLY					
1	PAOOF	53853	90105	DOOR, WALK-IN REFRIG ..... UOC: DST, DSU, EKN	1
1	PAOOO	81337	5-13-2656	DOOR, WALK-IN REFRIG ..... UOC: FGE	1
1	PAOOF	53853	90105	DOOR, WALK-IN REFRIG ..... UOC: DSV, EVB	4
2	PAOZZ	96906	MS35647-5	.PADLOCK INCLUDES KEY ..... UOC: DST, DSU, DSV	1
2	PAOZZ	53853	4882	.PADLOCK INCLUDES KEY ..... UOC: EKN, EVB, FGE	1
3	PAOZZ	57519	R3040592-1	..SCREW, TAPPING ..... UOC: DST, DSU, DSV	1
3	XDOZZ	87308	C003	..SCREW, MACHINE ..... UOC: EKN, EVB, FGE	1
4	PAOZZ	80205	NAS1455C00-10	..CHAIN, WELDLESS STEEL 9 INCH LONG. UOC: DST, DSU, DSV	1
4	PAOZZ	53853	4885	..CHAIN, ASSEMBLY, SING ..... UOC :EKN , C[B, FGE	1
5	PAOZZ	57519	R3040589-3	.SCREW, MACHINE ..... UOC: DST, DSU, DSV, EVB	8
5	PAOZZ	87303	C004	.SCREW, MACHINE ..... UOC: EKN, FGE	8
6	PAOZZ	32761	1245-1-1/8 O.S.	.HINGE, TEE ..... UOC: DST DSU, DSV	2
6	PAOZZ	32761	1245	.HINGE, TE ... ..... UOC: EKN , EVB, FGE	2
7	XBOZZ	57519	R3030832	.SHIM ..... UOC: DST, DSU , DSV	2
8	PAOZZ	57519	R3040589-3	.SCREW, MACHINE ..... UOC: DST, DSU, DSV	6
8	PAOZZ	87308	C004	.SCREW, MACHINE ..... UOC: EKN, EVB, FGE	6
9	PAOZZ	32761	Z-28111	.LATCH SET, RIM ..... UOC: DST, DSU , DSV, EVB	1
9	PAOZZ	32761	0056	.LATCH SET RIM ..... UOC: EKN, FGE	
10	PAOZZ	57519	R3040590-1	.SCREW, MACHINE ..... UOC: DST, DSU, DSV, EVB	3
10	PAOZZ	87308	C004	.SCREW, MACHINE ..... UOC: EKN, FGE	3
11	PAOZZ	32761	487-6-INCH-DOOR	.LEVER, LOCK-RELEASE ..... UOC: DST, DSU, DSV, EVB	1
11	PAOZZ	32761	0487A0056	.LEVER, LOCK-RELEASE ..... UOC: EKN, FGE	1
12	PAOZZ	57519	R3040592-1 .	.SCREW, TAPPING ..... UOC: DST, DSU, DSV	30
13	XBOZZ	57519	R3030839-1	.RETAINER, STRIP..... UOC: DST, DSU, DSV	2

## SECTION II

TM 9-4110-241-23P

(1) ITEM NO	(2) SMR CODE	(3) CAGEC	(4) PART NUMBER	(5) DESCRIPTION AND USABLE ON CODES(UOC)	(6) QTY
14	XBOZZ	57519	R3030839-2	.RETAINER, STRIP ..... UOC: DST, DSU, DSV	2
15	MOOZZ	32761	1289MF	.SEAL, NONMETALLIC SP MFD FROM SEAL. NONMETALLIC, P/N 1289, 15 FT REQUIRED ..... UOC: DST, DSU, DSV, EVB	1
15	MOOZZ	74951	D502N-1MF	.GASKET, DOOR MFD FROM TYPE I GASKET MATERIAL, PIN HD502N-1, 19 FT REQUIRED..... UOC: EKN, FGE	1

END OF FIGURE

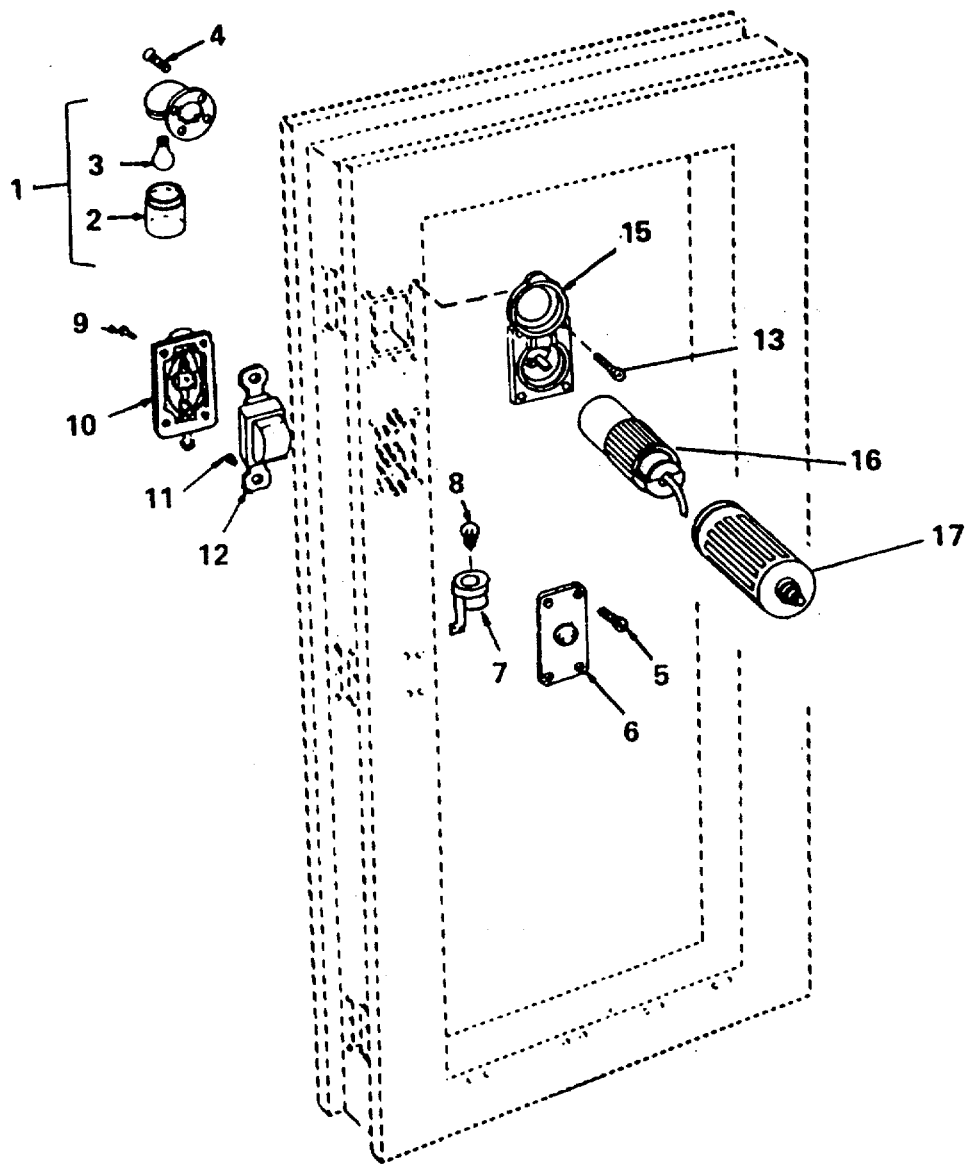


Figure 4. Electrical Components, Panel C (Models AAG00PF, A1200PFA, and AA4000PF) (Sheet 1 of 2)

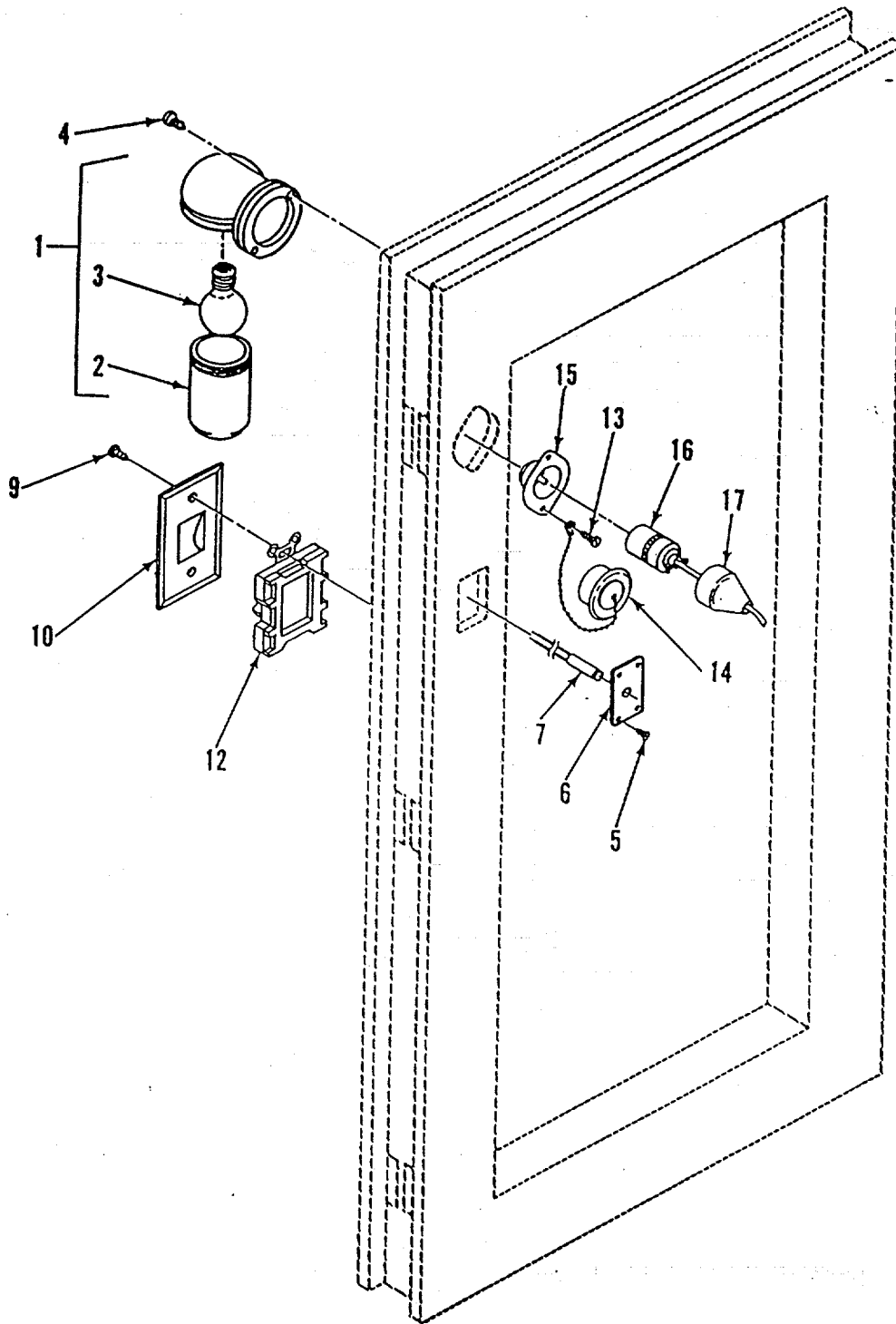


Figure 4. Electrical Components, Panel C (Models MDS1600N, TKR-600C and TKR-4000C) (Sheet 2 of 2)

## SECTION II

TM 9-4110-241-23P

(1) ITEM NO	(2) SMR CODE	(3) CAGEC	(4) PART NUMBER	(5) DESCRIPTION AND USABLE ON CODES(UOC)	(6) QTY
GROUP 02 ELECTRICAL WIRING, SWITCH LIGHT ASSEMBLY					
FIG. 4 ELECTRICAL COMPONENTS, PANEL C					
1	XBOZZ	57519	R2310410	LIGHT-ASSY ..... UOC: DST, DSU	1
1	XBOZZ	57519	R2310410	LIGHT-ASSY ..... UOC: DSV	4
1	PAOZZ	87518	2314-000-1000	FIXTURE, LIGHTING VAPOR PROOF..... UOC: EKN, FGE	1
1	PAOZZ	87518	2314-000-1000	FIXTURE, LIGHTING VAPOR PROOF ..... UOC: EVB	4
2	PAOZZ	08176	GL100PG	.GLOBE, ELECTRIC LIGH ..... UOC: DST, DSU, DSV, EKN, EVB	1
3	PAOZZ	58854	9iA23749-120V	.LAMP, INCANDESCENT ..... UOC: DST, DSU, DSV, EKN, EVB	1
4	PAOZZ	57519	R7040575-1A	SCREW, TAPPING ..... UOC: DST, DSU, DSV	4
4	XDOZZ	87308	C005	SCREW, WOOD..... UOC: EKN , EVB, FGE	2
5	PAOZZ	57519	R3040576-1A	SCREW, MACHINE ..... UOC: DST, DSU, DSV	4
5	PAOZZ	87308	C007	SCREW, WOOD ..... UOC: EKN, EVB, FGE	4
6	PAOZZ	15235	DS24G	COVER, CONDUIT OUTLE..... UOC: DST, DSU, DSV, FGE	1
6	PAOZZ	71744	25-1-SGS	COVER, OUTLET PILOT LIGHT ..... UOC: EKN EVB	1
7	PAOZZ	15235	C3310	LIGHT, INDICATOR. .... UOC: DST, DSU, DSV, FGE	1
7	PAOZZ	71744	6063-001-534	LIGHT, INDICATOR PILOT LIGHT ..... UOC: EKN, EVB	1
8	XDOZZ	52343	S56-115V .	LAMP, INCANDESCENT ..... UOC: DST, DSU, DSV	1
9	PAOZZ	57519	R3040576-1A	SCREW, MACHINE ..... UOC: DST, DSU, DSV	4
9	PAOZZ	57519	R3040576-1A	SCREW, MACHINE ..... UOC: EKN, EVB, FGE	2
10	PAOZZ	15235	DS128	COVER, CONDUIT OUTLE ..... UOC: DST, DSU , DSV	1
10	PAOZZ	71744	1750	PLATE, WALL, ELECTRIC ..... UOC: EKN, EVB , FGE	1
11	PAOZZ	57519	R3040576-1A	SCREW, MACHINE ..... UOC: DST, DSU, DSV	2
12	PAOZZ	81348	WS896/2-03A	SWITCH, TOGGLE ..... UOC: DST, DSU, DSV	1
12	PAOZZ	74545	1251	SWITCH, PUSH ..... UOC: EKN, EVB, FGE	1
13	PAOZZ	57519	R3040576-1A	SCREW, MACHINE ..... UOC: DST, DSU, DSV	4

## SECTION II

TM 9-4110-241-23P

(1) ITEM NO	(2) SMR CODE	(3) CAGEC	(4) PART NUMBER	(5) DESCRIPTION AND USABLE ON CODES(UOC)	(6) QTY
13	PAOZZ	87308	C007	SCREW, WOOD.....2 UOC: EKN, EVB, FGE	
14	XDOZZ	74545	4889	COVER, ELECTRICAL CO CAP AND CHAIN.....1 UOC: EKN, EVB, FGE	
15	XBOZZ	74545	7600	RECEPTACLE ASSEMBLY .....1 UOC: DST, DSU, DSV	
15	PAOZZ	74545	7486	CONNECTOR, RECEPTACL .....1 UOC: EKN, EVB, FGE	
16	PAOZZ	74545	7314-C	CONNECTOR, PLUG, ELEC .....1 UOC: DST, DSU, DSV	
16	PAOZZ	81348	WC596/50-1	CONNECTOR, PLUG, ELEC FEMALE RECEPTACLE .....1 UOC: EKN, EVB, FGE	
17	PAOZZ	74545	6031	PLUG, PROTECTIVE, DUS .....1 UOC: DST, DSU, DSV	
17	PAOZZ	74545	7440	SHIELD, ELECTRICAL C .....1 UOC: EKN, EVB, FGE	

END OF FIGURE

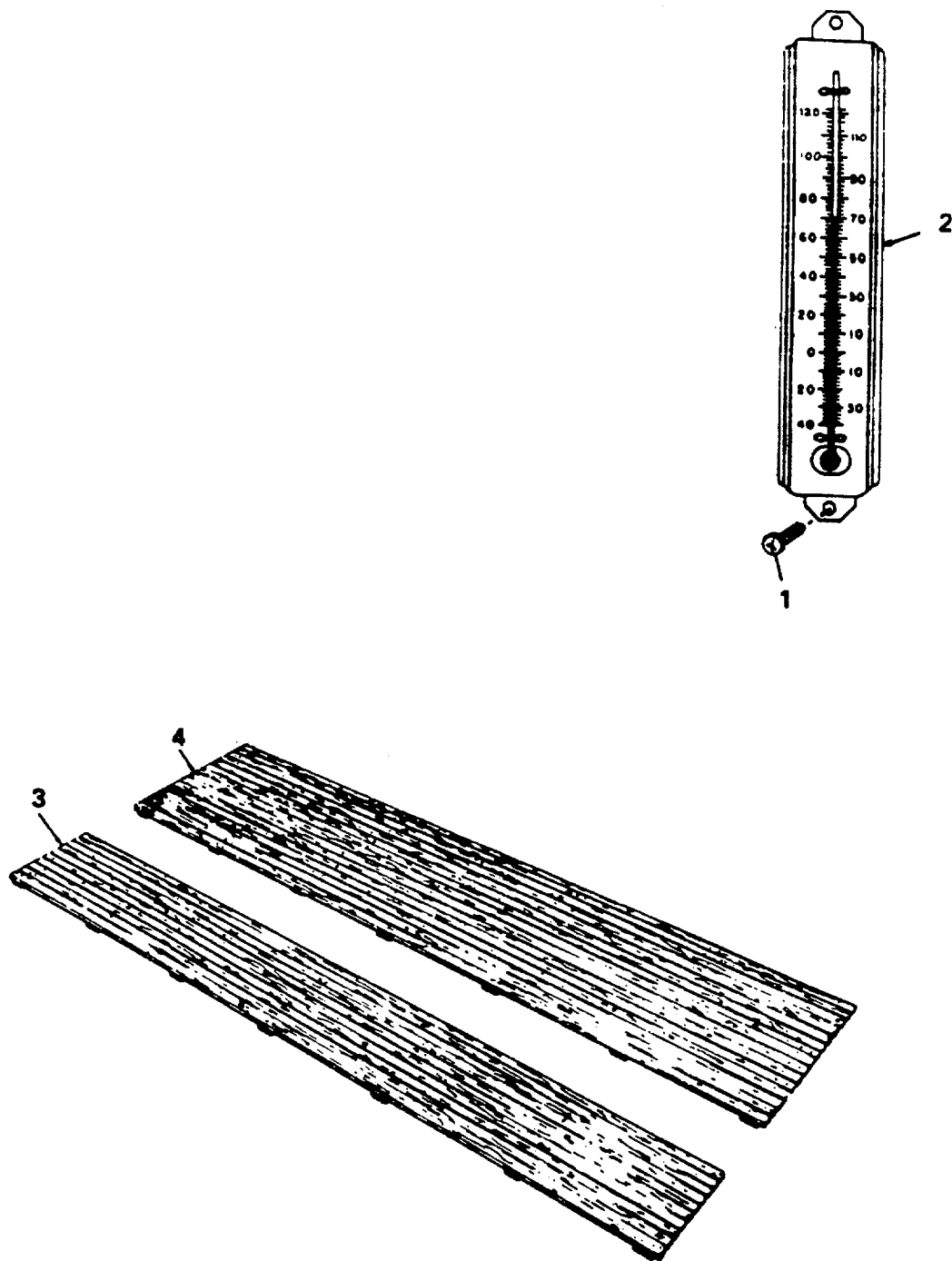


Figure 5. Thermometer and Floor Racks

SECTION II

TM 9-4110-241-23P

(1) ITEM NO	(2) SMR CODE	(3) CAGEC	(4) PART NUMBER	(5) DESCRIPTION AND USABLE ON CODES(UOC)	(6) QTY
GROUP 03 INTERIOR COMPONENTS					
FIG. 5 THERMOMETER AND FLOOR RACKS					
1	PAOZZ	57519	R3040577-1A	SCREW, MACHINE ..... UOC: DST, DSU, DSV	2
1	XDOZZ	87308	C005	SCREW, WOOD ..... UOC: EKN, EVB, FGE	2
2	PAOZZ	64467	269	THERMOMETER, SELF-IN ..... UOC: DST, DSU, DSV	1
2	PAOZZ	81348	GGT371BCLASS2STY LEB	THERMOMETER, SELF-IN ..... UOC: EKN, EVB, FGE	1
3	PAOZZ	81337	5-13-2669SMALL	RACK, FLOOR ..... UOC: DST, DSU, DSV, FGE	4
3	XDOZZ	53853	9914G	RACK, FLOOR, COMPLETE SMALL ..... UOC: EKN, EVB	4
4	XDOZZ	81337	5-13-2669 LARGE	RACK, FLOOR ..... UOC: DST, FGE	2
4	XDOZZ	81337	5-13-2669 LARGE	RACK, FLOOR ..... UOC: DSU	6
4	XDOZZ	81337	5-13-2669 LARGE	RACK, FLOOR ..... UOC: DSV, EVB	26
4	XDOZZ	53853	9915G	RACK, FLOOR, COMPLETE LARGE ..... UOC: EKN	2

END OF FIGURE



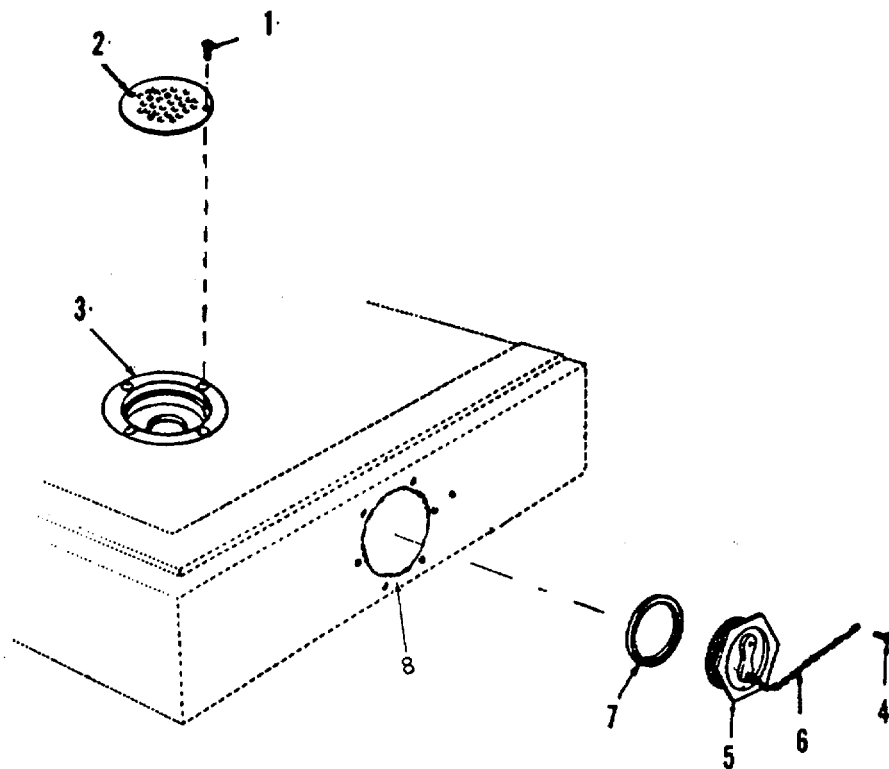


Figure 6. Drains

SECTION II

TM 9-4110-241-23P

(1) ITEM NO	(2) SMR CODE	(3) CAGEC	(4) PART NUMBER	(5) DESCRIPTION AND USABLE ON CODES(UOC)	(6) QTY
GROUP 03 INTERIOR COMPONENTS					
FIG. 6 DRAINS					
1	XDOZZ	87308	C005	SCREW, WOOD .....2 UOC: EKN, EVB, FGE	
1	PAOZZ	57519	R3040578-1A	SCREW, MACHINE .....2 UOC: DST, DSU, DSV	
2	XBOZZ	15436	236	STRAINER, DRAIN.....2 UOC: DST, DSU	
2	XBOZZ	B1543	6236	STRAINER, DRAIN .....2 UOC: DSV	
2	XDOZZ	53853	90132	STRAINER, WASTE DRAIN LEFT AND RIGHT .....2 FLOOR PANELS..... UOC: EKN, EVB , FGE	
3	PAOZZ	53853	90131	FLANGE, PIPE .....2 UOC: EKN, EVB	
3	PAOZZ	81337	5-13-2662	INSIDE DRAIN .....2 UOC: FGE	
4	PAOZZ	57519	R3040592-1	SCREW, TAPPING .....2	
5	XBOZZ	57519	R3110063	PLUG, DRAIN .....2	
6	PBOZZ	57519	R3110066	CHAIN. WELDLESS .....2	
7	PAOZZ	57519	R31110065	GASKET .....2 UOC: DST, DSU, DSV, EKN, FGE	
7	PAOZZ	53853	90130	DRAIN, FLOOR .....2 UOC: EVB	
8	PAOZZ	81337	5-13-2663	OUTSIDE DRAIN .....2 UOC: FGE	

END OF FIGURE

SECTION II

TM 9-4110-241-23P

(1) ITEM NO	(2) SMR CODE	(3) CAGEC	(4) PART NUMBER	(5) DESCRIPTION AND USABLE ON CODES(UOC)	(6) QTY
-------------------	--------------------	--------------	-----------------------	---------------------------------------------	------------

GROUP 04 BULK MATERIALS

FIG. BULK

1	PAOZZ	32761	285	GASKET .....	V
2	PAOZZ	74951	HDS02N-1	GASKET TYPE I .....	V
				UOC: EKN, EVB, FGE	
3	PAOZZ	57519	R2610089	RUBBER STRIP 1/2 INCHES TOP .....	V
4	PAOZZ	57519	R2610090	RUBBER STRIP .....	V
5	XDOZZ	57519	R2610091	RUBBER STRIP .....	V
6	PAOZZ	57519	R2610092	RUBBER STRIP .....	V
7	PAOZZ	32761	1289	SEAL, NONMETALLIC SP .....	V

END OF FIGURE

**BULK-1**

**Section III. (Not Applicable)**

## CROSS-REFERENCE INDEXES

STOCK NUMBER	FIG.	NATIONAL STOCK NUMBER INDEX ITEM	STOCK NUMBER	FIG.	ITEM
5930-00-015-0744	4	12	5120-01-201-6966	1	19
6240-00-044-5029	4	3		1	19
5930-00-051-4448	4	12	4010-01-203-0033	6	6
5935-00-114-8845	4	16	5330-01-205-3533	BULK	7
5935-00-201-3545	4	15	5340-01-205-3876	2	3
5935-00-222-0072	4	17		2	3
5305-00-224-0147	4	5		2	3
	4	13	5340-01-205-3378	3	11
5999-00-244-5390	1	18	5305-01-205-4969	3	3
	1	18		3	12
4010-00-402-0404	3	4		6	4
6210-00-493-9529	4	2	5305-01-205-4970	4	4
5340-00-617-7630	3	9	5305-01-205-5909	2	2
5340-00-808-4042	1	18		2	2
	1	18		2	2
	1	18	5305-01-205-5910	3	10
6685-00-889-7444	5	2	5305-01-205-9141	1	17
5330-00-961-4239	BULK	1		1	17
5340-01-004-5180	3	2		1	17
5935-01-005-2323	4	16		4	5
4110-01-038-8493	1	4		4	9
4110-01-038-8494	1	6		4	9
	1	6		4	11
4130-01-039-6361	3	1		4	13
	3	1	5305-01-205-9142	5	1
5410-01-040-0087	1	5	5305-01-205-9143	6	1
	1	5	5340-01-205-9536	2	1
	1	5		2	1
5410-01-040-0089	1	1		2	1
	1	1	4010-01-216-2566	3	4
	1	9	5305-01-236-1609	3	5
5975-01-041-3621	4	10		3	8
6685-01-079-1791	5	2	5330-01-237-7026	BULK	3
6210-01-079-1975	4	1	5330-01-237-7027	BULK	4
	4	1	5330-01-237-7029	BULK	6
5340-01-081-8269	3	6	5330-01-277-6156	BULK	2
6210-01--039-7183	4	7	5330-01-323-2749	6	7
5975-01-104-1099	4	6			
5340-01-109-9482	4	17			
5340-01-121-0534	3	6			
5305-01-138-4642	3	8			
	3	10			
4510-01-146-4623	6	7			
4730-01-147-2874	6	3			
4130-01-150-9861	1	8			
	1	8			
	1	8			
4130-01-153-9683	1	13			
4110-01-190-7346	5	3			
5120-01-201-6966	1	19			

## CROSS-REFERENCE INDEXES

CAGEC	PART NUMBER	PART NUMBER INDEX STOCK NUMBER	FIG.	ITEM
87308	C003		2	2
			3	3
87303	C004		3	5
		5305-01-138-4642	3	8
			3	10
87308	C005		4	4
			5	1
			6	1
87308	C007	5305-00-224-0147	4	5
			4	13
15235	C3310	6210-01-089-7183	4	7
15235	DS128	5975-01-041-3621	4	10
15235	DS24G	5975-01-104-1099	4	6
81348	GGT371BCCLASS2STYLEB	6685-00-889-7444	5	2
08176	GL1000PG	6210--00-493-9529	4	2
74951	HD502N-1	5330-01-277-6156	BULK	2
74951	HD502N-1MF		3	15
96906	MS35647-5	5340-01-004-5180	3	2
80205	NAS1455C00-10	4010-00-402-0404	3	4
57519	R2310410		4	1
			4	1
57519	R2610089	5330-01-237-7026	BULK	3
57519	R2610089MF		1	20
57519	R2610090	5330-01-237-7027	BULK	4
57519	R2610090MF		1	21
57519	R2610091		BULK	5
57519	R2610091MF		1	22
57519	R2610092	5330-01-237-7029	BULK	6
57519	R2610092MF		1	23
57519	R3030832		3	7
57519	R3030839-1		3	13
57519	R3030839-2		3	14
57519	R3040575-1A	5305-01--205-4970	4	4
57519	R3040576-1A	5305-01-205-9141	1	17
			1	17
			1	17
			4	5
			4	9
			4	9
			4	11
			4	13
57519	R3040577-1A	5305-01-205-9142	5	1
57519	R3040578-1A	5305-01-205-9143	6	1
57519	R3040589-3	5305-01-236-1609	3	5
			3	8
57519	R3040590-1	5305-01-205-5910	3	10
57519	R3040592-1	5305-01-205-4969	3	3
			3	12
			6	4
57519	R3040593		1	16

## CROSS-REFERENCE INDEXES

CAGEC	PART NUMBER	PART NUMBER INDEX STOCK NUMBER	FIG.	ITEM
57519	R3040504-1		1	15
57519	R3040595-1	5305-01-205-5909	2	2
			2	2
			2	2
57519	R3110063		6	5
57519	R3110066	401S-01-203-0033	6	6
57519	R31110065	5330-01-323-2749	6	7
34669	S-1/2-GRAY	5340-01-205-9536	2	1
			2	1
			2	1
81348	WC596/50-1	5935-01-005-2323	4	16
81348	WS896/2-03A	5930-00-051-4448	4	12
32761	Z-28111	5340-00-617-7630	3	9
32761	0056		3	9
32761	0487A0056		3	11
75915	105002	5999-00-244-5390	1	18
			1	18
32761	1145		1	19
			1	19
32761	1245	5340-01-081-8269	3	6
32761	1245-1-1/8 O.S.	5340-01-121-0534	3	6
74545	1251	5930-00-015-0744	4	12
32761	1289	5330-01-205-3533	BULK	7
32761	1289MF		3	15
71744	1750		4	10
87518	2314-000-1000	6210-01-079-1975	4	1
			4	1
15436	236		6	2
15436	248	5340-01-205-3876	2	3
			2	3
			2	3
71744	25-1-SGS		4	6
15436	250	5120-01-201-6966	1	19
			1	19
			1	19
64467	269	6685-01-079-1791	5	2
32761	285	5330-00-961-4239	BULK	1
32761	285MF		2	4
			2	4
			2	4
53853	40106	4130-01-150-9861	1	8
			1	8
72285	4028-9	5340-00-808-4042	1	18
			1	18
			1	18
32761	487-6-INCH-DOOR	5340-01-205-3878	3	11
53853	4882		3	2
53853	4885	4010-01-216-2566	3	4
74545	4889		4	14
81337	5-13-2L53		1	4
81337	5-13-2654		1	5

## CROSS-REFERENCE INDEXES

CAGEC	PART NUMBER	PART NUMBER INDEX STOCK NUMBER	FIG.	ITEM
81337	5-13-2655	4130-01-150-9861	1	8
81337	5-13-2656		3	1
81337	5-13-2657		1	6
81337	5-13-2658	5410-01-040-0089	1	1
			1	9
81337	5-13-2659		1	3
81337	5-13-2660		1	2
			1	10
81337	5-13-2662		6	3
81337	5-13-2663		6	8
81337	5-13-2665		1	7
			1	7
81337	5-13-2669LARGE		5	4
			5	4
			5	4
81337	5-13-2669SHALL	4110-01-190-7346	5	3
52343	6S6-115V		4	8
74545	6031	5340-01-109-9482	4	17
71744	6063-001-534		4	7
81543	6236		6	2
74545	7314-C	5935-00-114-8845	4	16
74545	7440	5935-00-222-0072	4	17
74545	7486	5935-00-201-3545	4	15
74545	7600		4	15
53853	90024		1	7
			1	7
53853	901-7		1	9
53853	90105	4130-01-039-6361	3	1
			3	1
53853	90106C		1	8
53853	90113	4110-01-038-8493	1	4
53853	90113C		1	4
53853	90114	5410-01-040-0087	1	5
			1	5
			1	5
53853	90114C		1	5
53853	90115	4110-01-038-8494	1	6
			1	6
			1	6
53853	90115C		1	6
53853	90117C		1	9
53853	90118	5410-01-040-0089	1	1
53853	90118C		1	1
53853	90119		1	11
53853	90119C		1	11
53853	90120		1	3
			1	11
53853	90120C		1	3
53853	90121		1	2
			1	2
			1	2



## CROSS-REFERENCE INDEXES

CAGEC	PART NUMBER	PART NUMBER INDEX STOCK NUMBER	FIG.	ITEM
53853	90121C		1	10
			1	10
			1	10
53853	90121C		1	2
53853	90122C		1	10
53853	90130	4510-01-146-4623	6	7
53853	90131	4730-01-147-2874	6	3
53853	90132		6	2
53853	90133		1	12
53853	90134	4130-01-153-9683	1	13
53853	90135		1	14
58854	92A23/49-120V	6240-00-044-5029	4	3
53853	9914G		5	3
53853	9915G		5	4

## CROSS-REFERENCE INDEXES

FIG.	ITEM	FIGURE AND ITEM NUMBER INDEX STOCK NUMBER	CAGEC	PART NUMBER
BULK	1	5330-00-961-4239	32761	285
BULK	2	5330-01-277-6156	74951	HD502N-1
BULK	3	5330-01-237-7026	57519	R2610089
BULK	4	5330-01-237-7027	57519	R2610090
BULK	5		57519	R2610091
BULK	6	5330-01-237-7029	57519	R2610092
BULK	7	5330-01-205-3533	32761	1289
1	1		53853	90118C
1	1	5410-01-040-0089	53853	90118
1	1	5410-01-040-0089	81337	5-13-2658
1	2		53853	90121
1	2		53853	90121
1	2		53853	90121
1	2		57853	90121C
1	2		81337	5-13-2660
1	3		53853	90120
1	3		53853	90120C
1	3		81537	5-13-2659
1	4		53853	90113C
1	4		81337	5-13-2653
1	4	4110-01-038-8493	53853	90113
1	5		53853	90114C
1	5		81337	5-13-2654
1	5	5410-01-040-0087	53853	90114
1	5	5410-01-040-0087	53853	90114
1	5	5410-01-040-0087	53853	90114
1	6		53853	90115
1	6		53853	00115C
1	6		81337	5-13-2657
1	6	4110-01-038-8494	53853	90115
1	6	4110-01-038-8494	53853	9U115
1	7		53853	90024
1	7		53853	90024
1	7		81337	5-13-2665
1	7		81337	5-13-2665
1	8		53853	90106C
1	8	4130-01-150-9861	53853	40106
1	8	4130-01-150-9861	53853	40106
1	8	4130-01-150-9861	81337	5-13-2655
1	9		53853	901-7
1	9		53853	90117C
1	9	5410-01-040-0089	81337	5-13-2658
1	10		53853	90121
1	10		53853	90121
1	10		53853	90121
1	10		53853	90122C
1	10		81337	5-13-2660
1	11		53853	90119
1	11		53853	90119C
1	11		53853	90120
1	12		53853	90133

## CROSS-REFERENCE INDEXES

FIG.	ITEM	FIGURE AND ITEM NUMBER INDEX STOCK NUMBER	CAGEC	PART NUMBER
1	13	4130-01-153-9683	53853	90134
1	14		53853	96135
1	15		57519	R3040594-1
1	16		57519	R3040593
1	17	5305-01-205-9141	57519	R3040576-1A
1	17	5305-01-205-9141	57519	R3040576-1A
1	17	5305-01-205-9141	57519	R3040576-1A
1	18	5340-00-808-4042	72285	4028-9
1	18	5340-00-808-4042	72285	4028-9
1	18	5340-00-808-4042	72285	4028-9
1	18	5999-00-244-5390	75915	105002
1	18	5999-00-244-5390	75915	105002
1	19		32761	1145
1	19		32761	1145
1	19	5120-01-201-6966	15436	250
1	19	5120-01-201-6966	15436	250
1	20		57519	R2610089MF
1	21		57519	R2610090MF
1	22		57519	R2610091MF
1	23		57519	R261009211F
2	1	5340-01-205-9536	34669	S-1/2-GRAY
2	1	5340-01-205-9536	34669	S-1/2-GRAY
2	1	5340-01-205-9536	34669	S-1/2-GRAY
2	2		87303	C003
2	2	5305-01-205-5909	57519	R3040595-1
2	2	5305-01-205-5909	57519	R3040595-1
2	2	5305-01-205-5909	57519	R1040595-1
2	3	5340-01-205-3876	15436	248
2	3	5340-01-205-3876	15436	248
2	3	5340-01-205-3876	15436	248
2	4		32761	285MF
2	4		32761	285MF
2	4		32761	285MF
3	1		81337	5-13-2656
3	1	4130-01-039-6361	53853	90105
3	1	4130-01-039-6361	53853	90105
3	2		53853	4882
3	2	5340-01-004-5180	96906	M5S35647-5
3	3		87308	C003
3	3	5305-01-205-4969	57519	R3040592-1
3	4	4010-00-402-0404	80205	NAS1455C00-10
3	4	4010-01-216-2566	53853	4885
3	5		87303	C004
3	5	5305-01-236-1609	57519	R3040589-3
3	6	5340-01-081-8269	32761	1245
3	6	5340-01-121-0534	32761	1245-1-1/8 O.S.
3	7		57519	R3030832
3	8	5305-01-138-4642	87308	C004
3	3	5305-01-236-1609	57519	R3040589-3
3	9		32761	0056

## CROSS-REFERENCE INDEXES

FIG.	ITEM	FIGURE AND ITEM NUMBER INDEX STOCK NUMBER	CAGEC	PART NUMBER
3	9	5340-00-617-7630	32761	Z-28I11
3	10	5305-01-138-4642	87308	C004
3	10	5305-01-205-5910	57519	R3040590-1
3	11		32761	0487A0056
3	11	5340-01-205-3878	32761	487-6-INCH-DOOR
3	12	5305-01-205-4969	57519	R3040592-1
3	13		57519	R3030839-1
3	14		57519	R3030839-2
3	15		32761	128911MF
3	15		74951	HDS02N-1MF
4	1		57519	R2310410
4	1		57519	R2310410
4	1	6210-01-079-1975	B7518	2314-000-1000
4	1	6210-01-079-1975	87518	2314-000-1000
4	2	6210-00-493-9529	08176	GL100PG
4	3	6240-00-044-5029	58854	92A23/49-120V
4	4		87308	C005
4	4	5305-01-205-4970	57519	R3040575-1A
4	5	5305-00-224-0147	87308	C007
4	5	5305-01-205-9141	57519	R3040576-1A
4	6		71744	25-1-SGS
4	6	5975-01-104-1099	15235	DS24G
4	7		71744	6063-001-534
4	7	6210-01-089-7183	15235	C3310
4	8		52343	656-115V
4	9	5305-01-205-9141	57519	R3040576-1A
4	9	5305-01-205-9141	57519	R3040576-1A
4	10		71744	1750
4	10	5975-01-041-3621	15235	DS128
4	11	5305-01-205-9141	57519	R3040576-1A
4	12	5930-00-015-0744	74545	1251
4	12	5930-00-051-4448	81348	WS896/2-03A
4	13	5305-00-224-0147	87308	C007
4	13	5305-01-205-9141	57519	R3040576-1A
4	14		74545	4889
4	15		74545	7600
4	15	5935-00-201-3545	744545	7486
4	16	5935-00-114-8845	74545	7314-C
4	16	5935-01-005-2323	81348	WC596/50-1
4	17	5340-01-109-9482	74545	6031
4	17	5935-00-222-0072	74545	7440
5	1		87308	C005
5	1	5305-01-205-9142	57519	R3040577-1A
5	2	6685-00-889-7444	8134	GGT371BCLASS 2STY LEB
5	2	6685-01-079-1791	64467	269
5	3			538539914G
5	3	4110-01-190-2346	81337	5-13-2669SMALL
5	4		53853	9915G
5	4		81337	5-13-2669LARGE
5	4		81337	5-13-2669LARGE

## CROSS-REFERENCE INDEXES

## FIGURE AND ITEM NUMBER INDEX

FIG.	ITEM	STOCK NUMBER	CAGEC	PART NUMBER
5	4		81337	5-13-2669LARGE
6	1		87308	C005
6	1	5305-01-205-9143	57519	R3040578-1A
6	2		B1543	6236
6	2		15436	236
6	2		53853	90132
6	3		81337	5-13-2662
6	3	4730-01-147-2874	53853	90131
6	4	5305-01-205-4969	57519	R3040592-1
6	5		57519	R3110063
6	6	4010-01-203-0033	57519	R3110066
6	7	4510-01-146-4623	53853	90130
6	7	5330-01-323-2749	57519	R31110065
6	8		81337	5-13-2663

By Order of the Secretary of the Army:

Official.



*Acting Administrative Assistant to the  
Secretary of the Army*  
00049

GORDON R SULLIVAN  
*General, United States Army*  
*Chief of Staff*

DISTRIBUTION

To be distributed in accordance with DA Form 12-25E, block no. 6267, requirements for TM 9-4110-241-23P.



# The Metric System and Equivalents

## Linear Measure

1 centimeter = 10 millimeters = .39 inch  
 1 decimeter = 10 centimeters = 3.94 inches  
 1 meter = 10 decimeters = 39.37 inches  
 1 dekameter = 10 meters = 32.8 feet  
 1 hectometer = 10 dekameters = 328.08 feet  
 1 kilometer = 10 hectometers = 3,280.8 feet

## Weights

1 centigram = 10 milligrams = .15 grain  
 1 decigram = 10 centigrams = 1.54 grains  
 1 gram = 10 decigrams = .035 ounce  
 1 decagram = 10 grams = .35 ounce  
 1 hectogram = 10 decagrams = 3.52 ounces  
 1 kilogram = 10 hectograms = 2.2 pounds  
 1 quintal = 100 kilograms = 220.46 pounds  
 1 metric ton = 10 quintals = 1.1 short tons

## Liquid Measure

1 centiliter = 10 milliliters = .34 fl. ounce  
 1 deciliter = 10 centiliters = 3.38 fl. ounces  
 1 liter = 10 deciliters = 33.81 fl. ounces  
 1 dekaliter = 10 liters = 2.64 gallons  
 1 hectoliter = 10 dekaliters = 26.42 gallons  
 1 kiloliter = 10 hectoliters = 264.18 gallons

## Square Measure

1 sq. centimeter = 100 sq. millimeters = .155 sq. inch  
 1 sq. decimeter = 100 sq. centimeters = 15.5 sq. inches  
 1 sq. meter (centare) = 100 sq. decimeters = 10.76 sq. feet  
 1 sq. dekameter (are) = 100 sq. meters = 1,076.4 sq. feet  
 1 sq. hectometer (hectare) = 100 sq. dekameters = 2.47 acres  
 1 sq. kilometer = 100 sq. hectometers = .386 sq. mile

## Cubic Measure

1 cu. centimeter = 1000 cu. millimeters = .06 cu. inch  
 1 cu. decimeter = 1000 cu. centimeters = 61.02 cu. inches  
 1 cu. meter = 1000 cu. decimeters = 35.31 cu. feet

## Approximate Conversion Factors

To change	To	Multiply by	To change	To	Multiply by
inches	centimeters	2.540	ounce-inches	Newton-meters	.007062
feet	meters	.305	centimeters	inches	.394
yards	meters	.914	meters	feet	3.280
miles	kilometers	1.609	meters	yards	1.094
square inches	square centimeters	6.451	kilometers	miles	.621
square feet	square meters	.093	square centimeters	square inches	.155
square yards	square meters	.836	square meters	square feet	10.764
square miles	square kilometers	2.590	square meters	square yards	1.196
acres	square hectometers	.405	square kilometers	square miles	.386
cubic feet	cubic meters	.028	square hectometers	acres	2.471
cubic yards	cubic meters	.765	cubic meters	cubic feet	35.315
fluid ounces	milliliters	29.573	cubic meters	cubic yards	1.308
pints	liters	.473	milliliters	fluid ounces	.034
quarts	liters	.946	liters	pints	2.113
gallons	liters	3.785	liters	quarts	1.057
ounces	grams	28.349	liters	gallons	.264
pounds	kilograms	.454	grams	ounces	.035
short tons	metric tons	.907	kilograms	pounds	2.205
pound-feet	Newton-meters	1.356	metric tons	short tons	1.102
pound-inches	Newton-meters	.11296			

## Temperature (Exact)

°F	Fahrenheit temperature	5/9 (after subtracting 32)	Celsius temperature	°C
----	------------------------	----------------------------	---------------------	----



**PIN: 049215-000**